

CERTIFICATE OF LOCATION OF GOVERNMENT CORNER

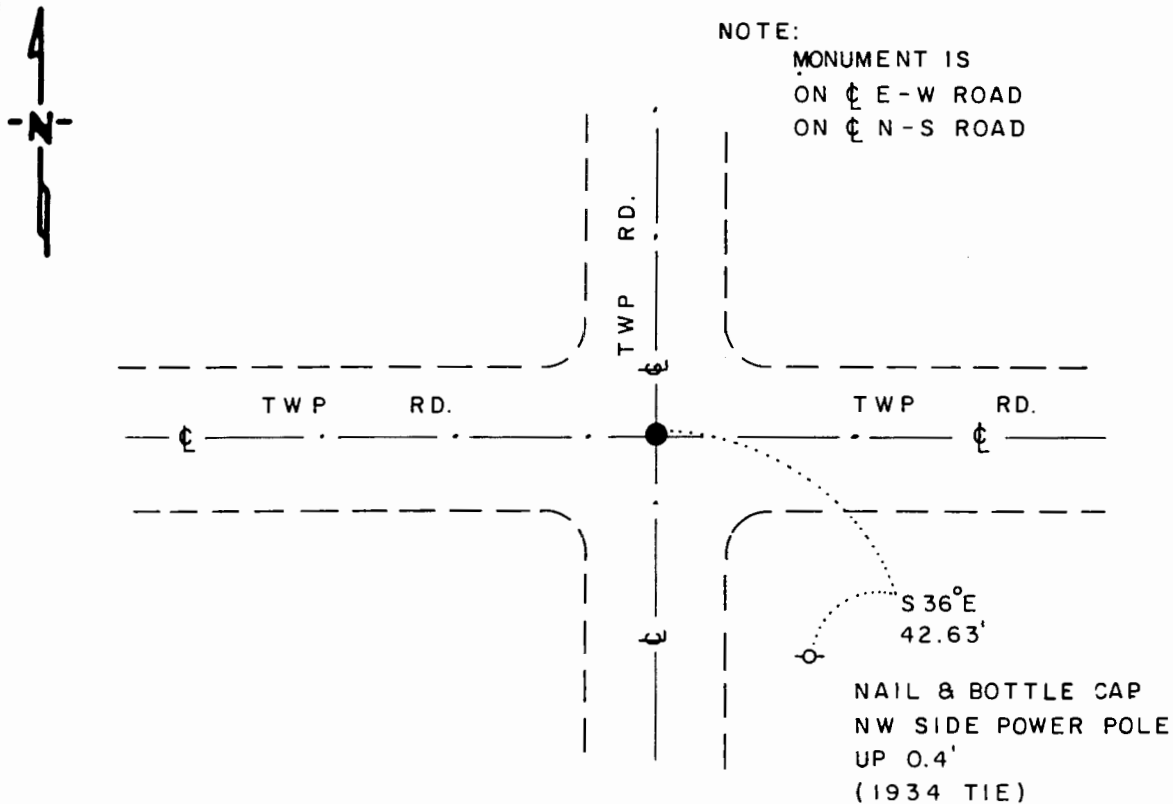
NORTHEAST Corner of Section 21, Township 105 N, Range 41 W, 5th P.M.

STATE OF MINNESOTA, County of MURRAY

At the corner location shown on the sketch

- On 3-22-90 found a 5/8" x 12" IRON ROD, DOWN 0.5', OVER 7" x 9"
DATE GRANITE FIELD STONE, DOWN 20"
 left monument as found, lowered monument, removed monument (explain)
- On 3-22-90 placed a 3/4" x 12" REBAR WITH ALUMINUM CAP STAMPED
DATE "DNR SURVEY MARKER", OVER STONE, DOWN 0.5'

SKETCH OF REFERENCE TIES



1983 MURRAY COUNTY
 COORDINATE SYSTEM
 N = 115,977.441
 E = 500,690.419

BEARING OBSERVED WITH COMPASS

Statement of evidence relative to this corner location is on back of page

J.B.M. 4-25-90
 WMA 1488

I hereby certify that this document and the data contained herein was prepared by me or under my direct supervision.

Lowell R. Pommeroy Jr. 5-10-90
SIGNATURE DATE

Registration No. 17005

- Land Surveyor, Professional Engineer
- County Surveyor, County Engineer

OFFICE OF THE COUNTY RECORDER
 County of _____

I hereby certify that this document was filed in the Co. Recorders office at _____ M. on the _____ day of MAY 16 1990 A.D., 19 _____

County Recorder James V. Johnson

By _____, Deputy

DOCUMENT NO. _____

Northeast Corner of Section 21, Township 105 North, Range 41 West

The DNR Bureau of Engineering contacted the following for survey information:

Secretary of State's Office
Murray County Recorder's Office
Murray County Highway Engineer's Office
Bell Surveying, Inc., of Worthington
Madsen Land Surveying of Fairmont

- 1861 U.S. General Land Office notes obtained from the Secretary of State's Office show corner marked with a post in a mound with trench and pits as per instructions.
- 1898 Surveyor's Record Book A, page 76, obtained from the County Recorder's Office contains a survey by J. W. Woolstencroft. Survey shows a government mound and stake at corner.
- 1901 Surveyor's Record Book A, page 154, obtained from the County Recorder's Office contains a survey by J. W. Woolstencroft. Survey shows a government stake, mound and stone at corner but does not indicate if found or set.
- 1934 Surveyor's Record Book A, page 379, obtained from the County Recorder's Office contains a survey by F. A. March. Survey shows a stone at corner but does not indicate if found or set. The following ties are shown to corner:
R.P. tack in corner fence post, northwest, 47.2 feet .
R.P. tack in corner fence post, southwest, 43.5 feet
R.P. tack in corner fence post, southeast, 35.1 feet
R.P. tack in corner fence post, northeast, 38.2 feet
- 1934 Surveyor's Record Book obtained from the County Highway Engineer's Office shows that a large field stone was found down 12 inches at corner. A 6 inch long steel fence post was set over the stone and the following ties were taken:
R.P. nail and cap in corner separate post, northwest, 47.72 feet
R.P. nail and cap in corner post, southwest, 43.35 feet
R.P. nail and cap in power pole, southeast, 42.61 feet
- 1936 Surveyor's Record Book obtained from the County Highway Engineer's Office shows corner but a description of a monument is not given. The following ties are shown to corner:
tack in corner fence post, northeast, 41.2 feet
tack in telephone pole, southeast, 51.0 feet
- No Date Field notes obtained from Bell Surveying, Inc., surveyed by Timothy Bell, RLS #16093, show that a stone was found down 2 feet at corner. A 3/4 inch rebar was set over the stone and the following ties were taken:
at the intersection of roads north, south, east and west
masonry nail in power pole, southeast, 43.00 feet
2645.44 feet from the north quarter corner of Section 21
- 1990 March, DNR Bureau of Engineering found a 5/8 inch diameter by 12 inch long rebar at corner. Removed the rebar and found a 7" by 9" granite field stone down 20 inches. Discarded the found rebar and set a DNR Survey Marker over the stone. Searched for and found record ties as shown on sketch of reference ties. The granite field stone was found to be:
at the intersection of roads north, south, east and west
2645.07 feet from the north quarter corner of Section 21

Analysis of the above information led the DNR Bureau of Engineering to conclude that the found granite field stone marks the location of the corner.